



Methods Machine Tools

**Big Capacity,
Big Performance,
HUGE VALUE!**

High Performance Vertical Machining Center for Die & Mold

SIRIUS UL/G



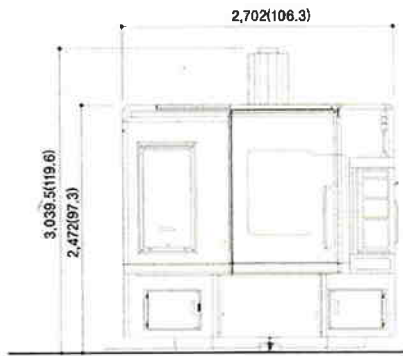
- High Performance VMC Mold and Die Center
- High Performance Spindle - 20k RPM Standard
- Fanuc 18i-MB Control
- Stable Structure High-Rigid Slant Frame
- Unique 30 Position ATC
- Wide Worktable (43.3" x 23.6")

Dimension

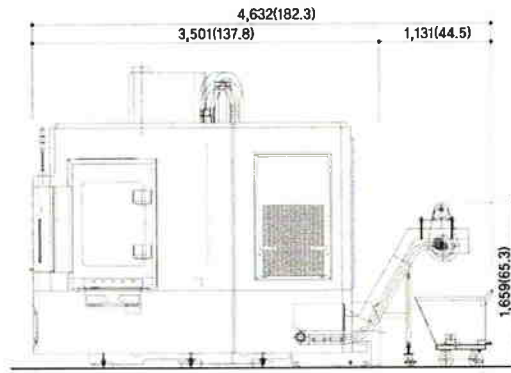
High Performance Vertical Machining Center for Die & Mold

SIRIUS UL/G

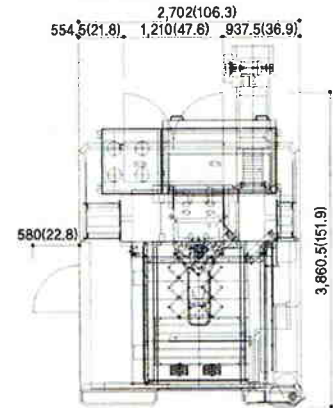
Front View



Side View



Top View



unit : mm (inch)

Machine specifications

CAPACITY	XY/Z axis travel	mm (inch)	1,020/600/550(40.2/23.7/21.7)
	Distance from table surface to spindle nose <td>mm (inch) <td>200~750(7.9~29.5)</td> </td>	mm (inch) <td>200~750(7.9~29.5)</td>	200~750(7.9~29.5)
	Distance from column to spindle center <td>mm (inch) <td>660(26)</td> </td>	mm (inch) <td>660(26)</td>	660(26)
TABLE	Surface(LxW)	mm (inch) <td>1,100x600(43.3/23.7)</td>	1,100x600(43.3/23.7)
	Max weight on table	kg (lb)	700(1543)
	T-slot	mm (inch) <td>18/100/5EA(0.7/3.94/5EA)</td>	18/100/5EA(0.7/3.94/5EA)
SPINDLE	Max speed	rpm	12,000(20,000)
	Bearing ID	mm (inch) <td>∅80(∅3.15)</td>	∅80(∅3.15)
	Taper hole	-	NT#40(7/24Taper)
FEEDRATE	Rapid(X/Y/Z)	m/min(ipm) <td>30/30/30(1,181/1,181/1,181)</td>	30/30/30(1,181/1,181/1,181)
	Max cutting	m/min(ipm) <td>24(945)</td>	24(945)
ATC	Tool shank	-	MAS-403-BT40(USA: CAT40)
	Tool capacity	EA	30
	Max tool diameter	mm (inch) <td>∅80(∅3.15) / ∅170(∅6.7)</td>	∅80(∅3.15) / ∅170(∅6.7)
	Max tool length	mm (inch) <td>300(11.8)</td>	300(11.8)
	Max tool weight	kg (lb) <td>6(13.2)</td>	6(13.2)
	Tool changing time(Tool to tool)	sec	1.5
MOTOR	Spindle	KW(HP)	11/7.5(15/10)
	Feed(X/Y/Z)	KW(HP)	4/4/7(5/5/10)
	Lubricant pump	KW(HP)	0.053(0.072)
	Coolant pump	KW(HP)	0.4(0.54)+0.9(1.2)
	Spindle oil suction pump	KW(HP)	0.75(1)
TANK	Spindle oil cooler tank	ℓ (gal)	60(15.9)
	Lubricant tank	ℓ (gal)	12(3.2)
	Coolant tank	ℓ (gal)	450(118.9)
DIMENSION	Height	mm (inch) <td>3,040(119.7)</td>	3,040(119.7)
	Floor space	mm (inch) <td>2,702x3,500(106.4x137.8)</td>	2,702x3,500(106.4x137.8)
	Weight	kg (lb) <td>8,500(18740)</td>	8,500(18740)
POWER SOURCE	Electrical power	KVA	30
	Compressed air	Mpa(psi)	0.5~0.7(72~102)
AIR CONSUMPTION	Nℓ /min		690
CONTROLLER			FANUC 18i-MB

NC Specifications (FANUC 18i - MB)

(S:Standard, O:Option)

ITEM	SPEC	
CONTROLLED AXIS	Controlled axis	3-axis S
	Controllable axis expansion	6-axis O
INPUT OPERATION	Simultaneous controllable axis/expansion	4-axis O
	Least input increment	0.001mm / 0.0001" S
INTERPOLATION	Decimal point input	Available S
	Inch/Metric conversion	G20, G21 S
	Positioning	G00 S
	Linear interpolation	G01 S
FEED FUNCTION	Circular interpolation	G02, G03 S
	Helical interpolation	S
	Dwell (Per sec)	G04 S
	Minimum increment of MPG	0.001 / 0.01 / 0.1mm (0.0001" / 0.001" / 0.01") S
PROGRAM STORAGE/EDIT	Rapid traverse override	F0, F25, F50, F100 S
	Feedrate override	0~150% S
	Jog override	0~4000 mm/min S
	Part program storage length	320m(129KB) S
	Number of stored programs	200 Pairs S
	Part program editing	ERASE, INPUT, CHANGE S
	Program number search	O NUMBER SERCH S
	Sequence number search	N NUMBER SERCH S
	Absolute/Incremental programming	G90 / G91 S
	Return to original point check	S
COORDINATE SYSTEM	Automatic zero return	G28 S
	Coordinate system setting	G52 S
	Workpiece coordinate system	G54-G58 S
OPERATION SUPPORT FUNCTION	Machine lock, Single block, Dry run, Optional stop, Block skip	S
Embedded Ethernet	Embedded Ethernet Interface	S
DATA INPUT/OUTPUT	Input/Output interface	RS232C S
S/T/M FUNCTION	Memory card interface	S
	spindle function	Command is S followed by 4 digits S
PROGRAM SUPPORT FUNCTION	Tool (T) function	Command is T followed by 4 digits S
	Miscellaneous (M) function	Command is M followed by 3 digits S
	Canned cycle	G80-G89 S
	Mirror image	M20, M21, M22 S
DISPLAY	Custom macro B	S
	Program data input	G10 S
	Cutter diameter compensation C	G40, G41, G42 S
	Chamfering/Corner Tr	S
	Run hour display	S
	Coordinate system rotation	G68 / G69 S
	Handle interruption	S
	LCD	8.4" Color LCD S
	Graphic display	Korea/English/Germany/Italy/Spain/Portugal S
	Display language	S
SAFTY MAINTNANCE	Self diagnostic function	S
	Store stroke limit	Soft O.T S
HYWACHEON Artificial Intelligence	Main spindle orientation	S
	Background editing	S
	Alarm history display	S
	Clock function	S
	Help function	S
	HA Function	G5.1 Q1 S
	HECC function	S
	HA Function II (64bit RISC)	G05 P10000 O
	Part program storage length	640m (240KB), 1280m (490KB), 2560m (980KB) O
	Number of registerable program	400 EA, 1000 EA O
LCD Display	10.4" Color LCD O	
Tool file management	O	
Tool offset memory	400, 999 Pairs O	
Addition of workpiece coordinate system	48 Pairs, 300 Pairs O	
Data server	ATA Flash Card 512MB O	
Remote buffer	O	
Conversational automatic program	Manual Guide I O	

* Specifications are subject to change without notice. Not responsible for misprints or typographical errors.

Standard Accessories

- HAI function
- HECC function
- Coolant system
- Work light
- Tool kit & box
- Rigid tapping
- Spindle cooler
- Oil mist
- Air blower
- Work coordinate system
- Leveling bolt & plate
- Operation manual & parts list
- Orientation sensor
- Lubrication system
- Signal lamp(R,G)
- Manual pulse generator(1EA)
- Base around splash guard
- Data server
- Door interlock
- Through spindle coolant(7.5bar)
- Screw chip conveyor
- Z-Axis Scale

Optional Accessories

- Transformer(30KVA)
- Through spindle coolant(25bar)
- Mist collector
- Lift-up chip conveyor & box
- Manual pulse generator(3EA)
- Data server interface
- Coolant gun
- Semi-dry cutting system(ECO Booster)
- Touch probe
- Signal lamp(R,G,Y)
- Linear scale(X,Y,Z-axis, 1m, glass)
- HTLD function
- Optima HTLD function
- Air gun
- Automatic door



Methods Machine Tools
64 Union Ave.
Sudbury, MA 01776
(978) 443-5388

Massachusetts • Arizona
California • Colorado
Illinois • Michigan
North Carolina