

Twin Spindle 4 Axis CNC Lathe

TTC 10



www.hwacheon.com

HWACHEON

TTC 10

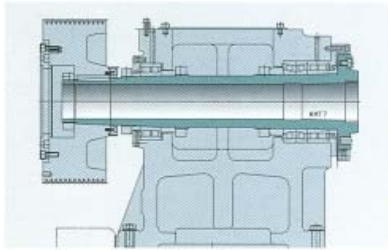
Twin Performance Vertical CNC Lathe



MAIN FEATURES

- Column type turret design provides exceptional rigidity, smooth axis movement, high speed positioning. Heavy Duty Machining with Column and Turret Slide Design
- Realization of high durability and stable cutting condition through turret bar structure
- Reduction of idle - time with high rapid traverse (Rapid : 30m/min (X,Z-axis))
- Easy operation and stability
- High productivity and efficiency through integration in progress
 - Swift index time : 0.5sec
 - Tools : 12EA
 - Quick feed : 1181ipm (Hi-g : 0.5g)
- High productivity through improved chip disposal system
- Easy set-up, Simple Operation and Quick Maintenance

Powerful, High speed spindle

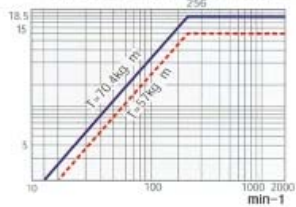


Hi-Performance Spindle

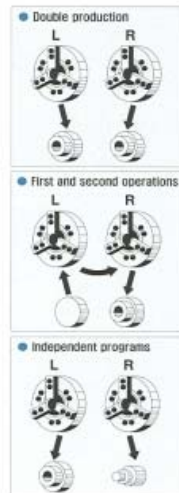
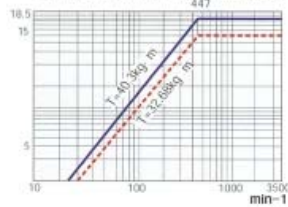
- Various process systems certainly ensure high productivity and high efficiency, and you can choose a proper process system in accordance with production purpose

- Achieving excellent performance with symmetry bearing structure of low heating production
- Realization of high durability and minimized noise with adopting new type of spindle belt

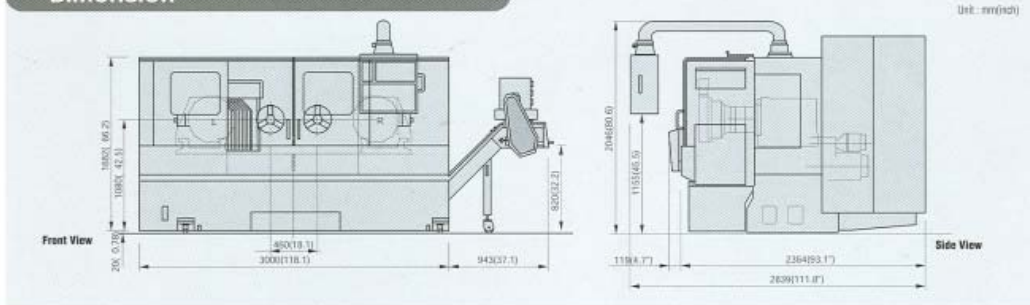
● 18.5/15kW 30min/cont.(2,000min-1) Opt.



● 18.5/15kW 30min/cont.(3,000min-1) Opt.



Dimension



Machine Specifications

| | | | |
|----------------------|------------------------------|------------|---------------------------|
| Capacity | Swing over bed | mm(inch) | ∅500 (∅19.7) |
| | Max. turning dia. | mm(inch) | ∅400 (∅15.7) |
| | Std. turning dia. | mm(inch) | ∅310 (∅12.2) |
| | Max. turning length | mm(inch) | 220(9) |
| Spindle | Chuck size | inch | 10 |
| | Distance between sp. centers | mm(inch) | 450(18.1) |
| | Max. spindle speed | min-1 | 2,500 |
| Turret | Spindle nose | | ASA A2-8 |
| | Through spindle hole | mm(inch) | ∅171 (∅6.7) |
| | Draw tube ID | mm(inch) | ∅150 (∅5.9) |
| | Spindle bearing inner dia. | mm(inch) | ∅120 (∅4.7) |
| | No. of tools | EA | 12-12 |
| Feedrates | Tool size | mm(inch) | □254 □50 □3.98(∅1.57) |
| | Turret indexing time | sec | 0.8 |
| | Rapid traverse(X/Z/B) | m/min(fpm) | 30/30(118/118) |
| | X-axis travel | mm(inch) | 220(9) |
| Motor | Z-axis travel | mm(inch) | 220(9) |
| | Spindle motor | WHP(W) | AC15/18.5/20/25 |
| | Servo motor | WHP(W) | AC4/0.5/0.5/0.4/0 |
| | Lubrication pump | WHP(W) | 0.65/0.97 |
| | Hydraulic pump | WHP(W) | 2.2/3 |
| | Coolant pump | WHP(W) | AC1/40/5/4 |
| Tank capacity | Lubrication tank | l (gal) | 123 (17) |
| | Hydraulic tank | l (gal) | 702 (94) |
| | Coolant tank | l (gal) | 380 (100) |
| Power source | Electrical power supply | kVA | 55 |
| Machine size | Height | mm(inch) | 2,046 (80.5) |
| | Floor space | mm(inch) | 3,000(2,840)×1,800(111.8) |
| | Weight | kg(lb) | 9,400(20,723) |
| NC | | | FANUC 18i-TB 2 Paths |

NC Specifications//FANUC18i-TB

| | | G: Standard, O: Option | |
|------------------------------------|--|---|-----|
| | Item | Spec. | |
| Control axis | Control axis | 2-axis | 5 |
| | Control/steer axes expansion | 4-axis (MC, SMC, S Type spec) | 0 |
| | Servo/steer control axis/expansion | 2-axis/4-axis | 5/0 |
| Input operation | Load input increment | 0.001mm/0.0001" | 5 |
| | Axis name | X,Z,W | 5 |
| | Decimal point input | Available | 5 |
| Interpolation | Inter/Metric conversion | G20/G21 | 5 |
| | Positioning/Linear/Circular/Dwell | G00/G01/G02/G03/G04 | 5 |
| | Feed per min/Feed per revolution | G96/G97 | 5 |
| | Minimum increment of MPG | 0.001/0.010, 1mm/0.0001", 0.001", 0.01", 1 | 5 |
| | Rapid traverse override | F0.125, F50, F100 | 5 |
| Program storage/edit | Jog override/Feed rate override | 0-100% (Min: 0-150%) | 5 |
| | Program change/Registered program | 64/90/14/8/3/2/3/3/4 | 5 |
| | Program editing | Delete, Insertion, Attention | 5 |
| | Program/Sequence number search | Q/N number search | 5 |
| | Absolute/Incremental programming | Combined use in the same block | 5 |
| Coordinate system | Return to original point check | G27 | 5 |
| | Automatic zero-latch | G28 | 5 |
| | Coordinate system setting | G50 | 5 |
| | Tool offset memory | 33axis | 5 |
| | Tool geometric & wear offset | | 5 |
| Operation support function | Tool nose radius compensation | | 5 |
| | External instantaneous function | Machine lock, Single block, Dry run | 5 |
| | Auxiliary function switch | Optional stop, Auto restart, Block skip | 5 |
| Data input/output | Input/Output interface | RS232C | 5 |
| | Memory Card interface | | 5 |
| Embedded ethernet | Embedded Ethernet interface | | 5 |
| | Spindle(S) function | Command is S followed by 4 digits | 5 |
| | Constant surface speed control | G96/G97 | 5 |
| | Tool(T) function | Command is T followed by 5 digits | 5 |
| | Macro/continuous(M) function | Command is M followed by 5 digits | 5 |
| Program support function | Single canned cycle | G90, G92, G94 | 5 |
| | Multiple repetitive cycles | G70-G76 | 5 |
| | Custom macro B | | 5 |
| | Programmable delay timer | G10 | 5 |
| | Direct drawing dimension programming | | 5 |
| | Chambered Corner II | | 5 |
| | Run hour display | | 5 |
| Thread cutting cycle retract | Thread cutting is temporarily stopped when retraction is executed and tool returns to starting point | 5 | |
| Display | LCD Display/Graphic display | 10.4" color LCD | 5 |
| | Multi-language display | English/Korean/German/French/Spanish/Portuguese | 5 |
| Safety/Maintenance | Steady stroke limit | Soft DT | 5 |
| | Tool spindle orientation | | 5 |
| | Background cutting/Warm history display | | 5 |
| Option | Check/Help/Soft diagnosis function | | 5 |
| | Part Program storage length | 1280M/4500L/2500M/900R | 0 |
| | Number of registrable program | 408, 1000 EA | 0 |
| | Tool offset memory | 64, 99, 400, 999 pair | 0 |
| | Multiple repetitive cycles: II | G54-G59 | 0 |
| Workpiece coordinate system | G54-G59 | 0 | |
| Conventional automatic program | Syntax CAPT | 0 | |
| Right tapping/Tool life management | | 0 | |

* Specifications are subject to change without notice. Not responsible for misprints or typographical errors.

Standard Accessories **Optional Accessories**

- | | |
|---|--|
| <ul style="list-style-type: none"> Hydraulic unit Draw interlock Coolant system Hydraulic chuck 10" Soft jaw Work light Foot switch Operation manual and parts list Leveling screw & set plate Tool box Face & I.D holder(4EA) O.D holder(8EA) Boring bar holder(12EA) Boring bar sleeve(12EA) - φ12, φ16, φ20, φ25, φ32, φ40 Drill socket(8EA) - MT1, MT2, MT3, MT4 Flicker lamp | <ul style="list-style-type: none"> Bar feeder Collet chuck Transformer(50kVA) Hydraulic chuck 12"(halfrow) Hard jaw Spindle motor AC18.5/22kW (2,000min-1, 3,000min-1) Chip conveyor & box U-Drill holder U-Drill sleeve - φ20, φ25, φ32, φ40 Tool counter Work counter Auto door |
|---|--|

HWACHEON www.hwacheon.com

HCS-C19-EngA Rev.8 200508

HEAD OFFICE
976-1 JANGDEOK-DONG, KWANGSAN-KU, KWANGJU, KOREA
TEL: 82-62-951-5111/20 FAX: 82-62-951-0086

OVERSEAS SALES DIVISION
1022-7 BANG BAE-DONG, SEOCHO-KU, SEOUL KOREA
TEL: 82-2-523-7766 FAX: 82-2-523-2862/7

HWACHEON MACHINERY AMERICA INC.
50 LAKEVIEW PARKWAY VERNON HILLS, IL 60061, USA
TEL: 1-847-573-0100 FAX: 1-847-573-9900

HWACHEON MACHINERY EUROPE GMBH
KAISERSWERTHER STR. 83C D-40882 RATINGEN, GERMANY
TEL: 49-2102-490424/5 FAX: 49-2102-472214

HWACHEON MACHINERY CHINA
9G33 SHANGHAI MART 2239 YANAN ROAD(WEST)
SHANGHAI, CHINA
TEL: 86-21-6236-3205, FAX: 86-21-6236-3206