

# ROBODRILL DDR

High-Speed Rotary 4th Axis System



## ROBODRILL DDR/B

### Finally, a fourth axis fast and rugged enough...

For years, RoboDrill owners have had to watch these racehorse VMCs grind to a halt, waiting for slow fourth-axis tables to unclamp, rotate, and clamp. Now, FANUC introduces the DDR – a fourth-axis table designed specifically to complement the speed and versatility of the RoboDrill.

Capable of 200 RPM, the FANUC DDR can unclamp, rotate 180°, and reclamp in less than 0.3 seconds.

Virtually backlash-free, the DDR's direct drive motor has no gears to wear out or sustain damage. If bumped, it can be easily tuned to original specifications.

A true milling fourth axis, the DDR has a part loading capacity of 220 lb and 369 ft-lb of torque, enough to handle even the most difficult applications.

With its unique combination of speed, strength, and reliability, the DDR is ideal for small volume job shops or OEMs making millions of parts. And, priced at thousands of dollars less than comparable fourth-axis tables, it is an exceptional value.

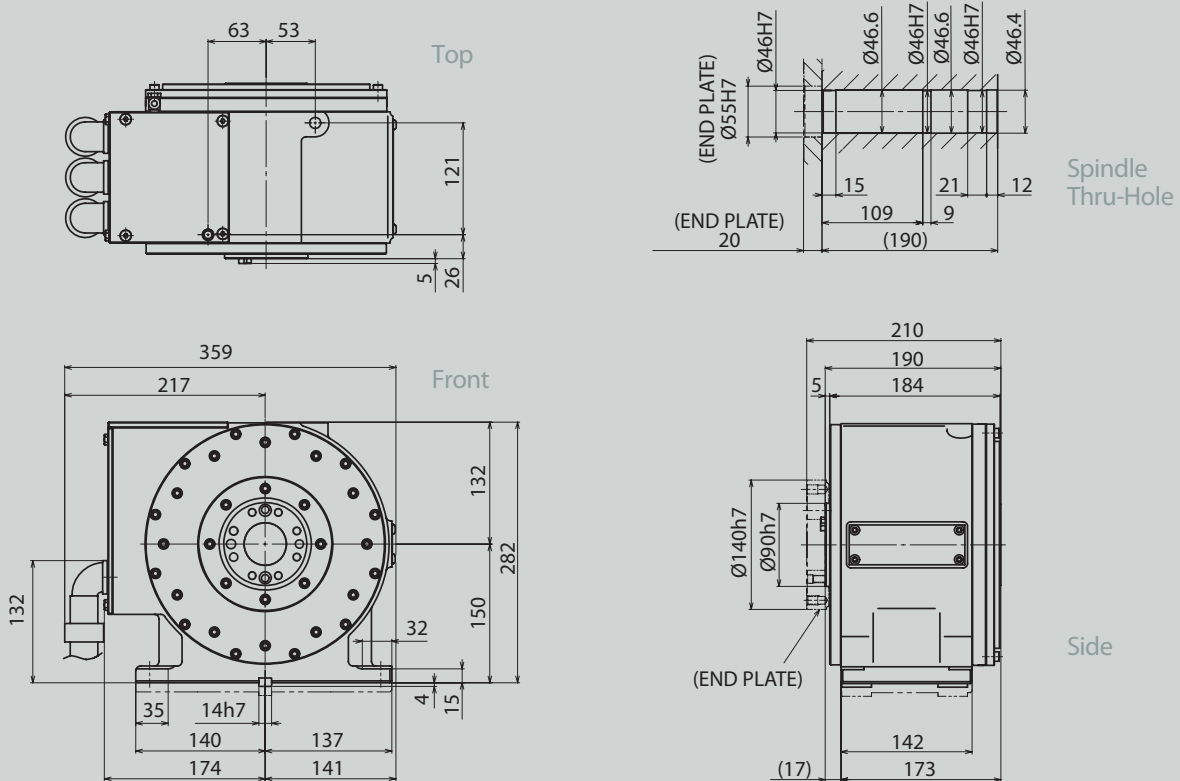
### to keep up with the lightning-fast RoboDrill!

The world's most popular small machining centers, RoboDrill VMCs offer milling capabilities unmatched in a 30-taper machine. Available in three sizes with "Big Plus" spindles; 14- or 21-station toolchangers, and the FANUC 31-iA5 Nano control, they provide lightning fast drilling, tapping, deburring, chamfering, as well as reverse tapping to 8,000 RPM. With feedrates to 2362 IPM, rapid traverses to 2125 IPM, accelerations (in X, Y, and Z) to 15 G, 16-second tool changes (chip-to-chip), a 10,000 RPM spindle, and up to 51.6 ft-lb of torque, the beefy new RoboDrill F makes short work of a wide range of milling, drilling, and tapping operations.

 **Methods  
Machine  
Tools Inc**

# Dimensions: DDR/B

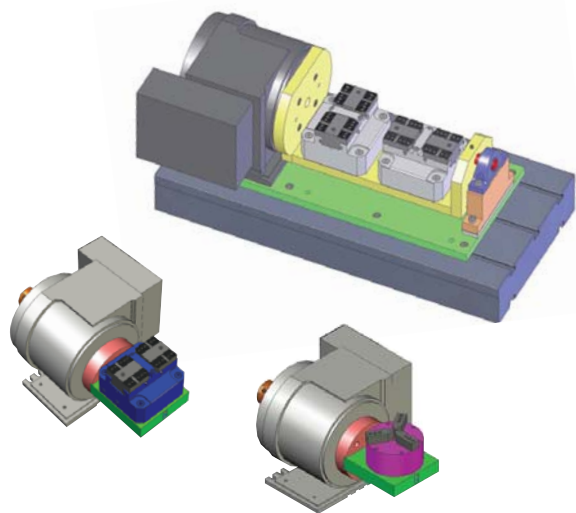
DDR/B Direct Drive 4th Axis  
All dimensions in mm



## Specifications: DDR/B

Dimensions	Table diameter	140 mm
	Center line height	150 mm
	Spindle face	90 mm
	Spindle thru-hole	46 mm
Motor	Type	DIS 260/B
	Drive method	Direct drive
	Maximum speed	200 rpm
	Maximum torque	192 ft-lb
Precision	Resolution	1/10,000
	Least input increment	0.001°
	Indexing precision	± 10 seconds
Clamp	Method	Air pressure and spring
	Torque	369 ft-lb with 72 psi
Weight	DDR/B 4th axis	150 lb
	Workpiece (maximum)	220 lb

## Workholding Options



TEL: (978) 443-5388 FAX: (978) 440-9405  
www.methodsmachine.com

**Methods  
Machine  
Tools Inc**